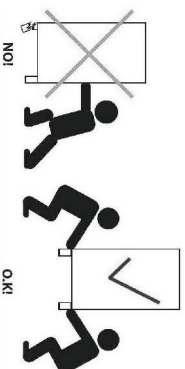
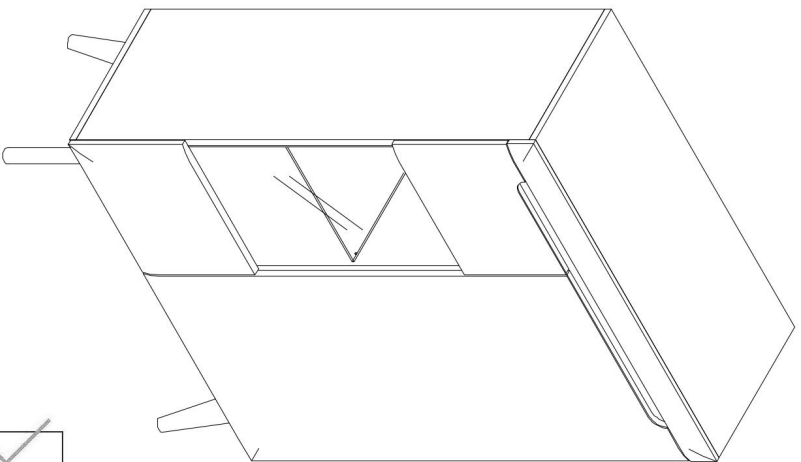


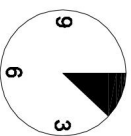
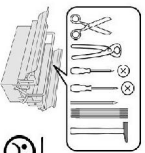
DORIN

NWT90



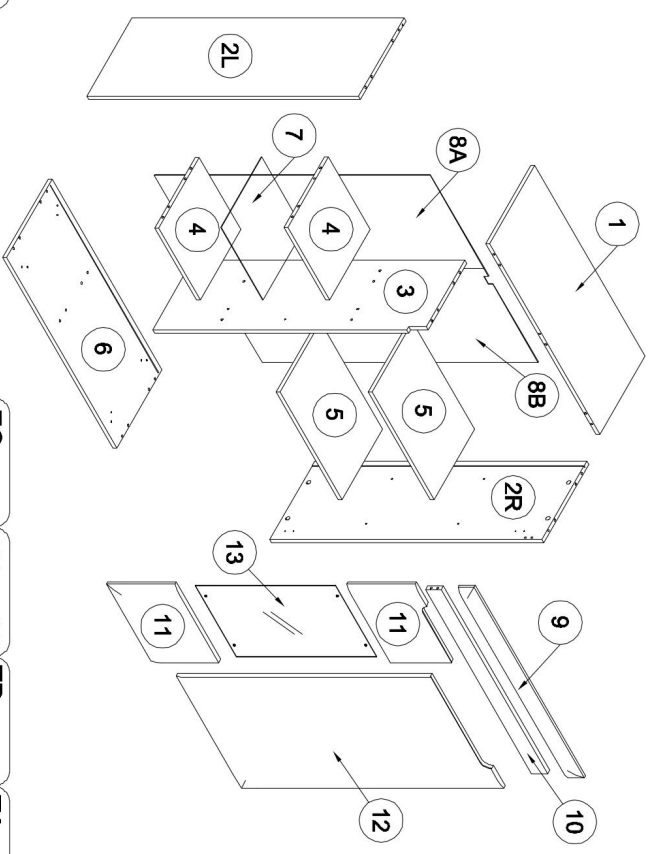
31.8.2017

- D Montageanleitung
- FR Notice de montage
- NL Handleiding voor de montage
- CZ Montážní návod
- HU Szerelési útmutató
- TR Montaj talimatı
- GB Assembly Instructions
- IT Istruzioni di montaggio
- PL Instrukcja montażu
- SK Návod na montáž
- RO Instrucțiuni de montaj
- RU Инструкции по монтажу

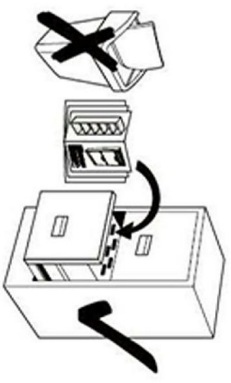
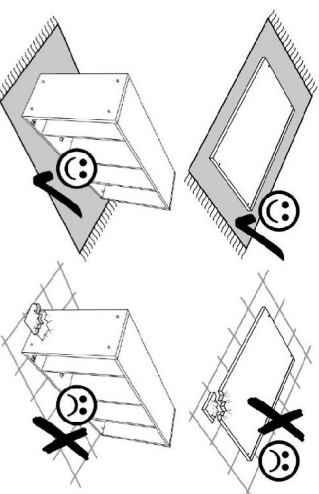


20 min.

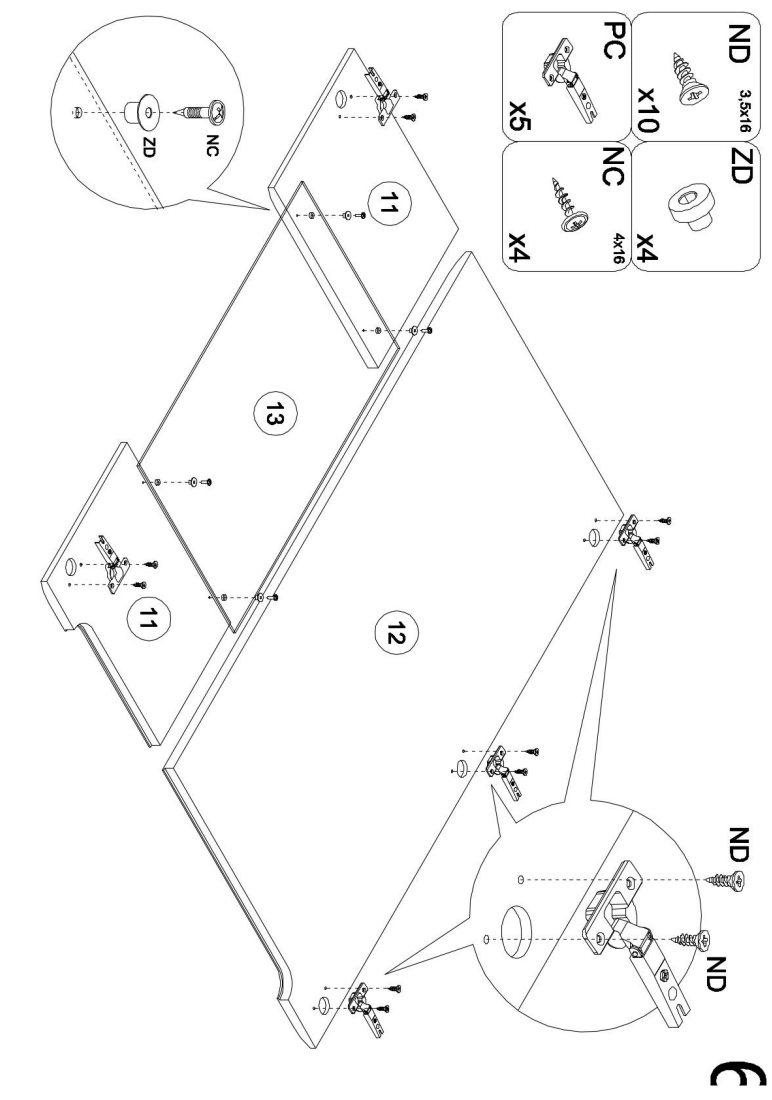
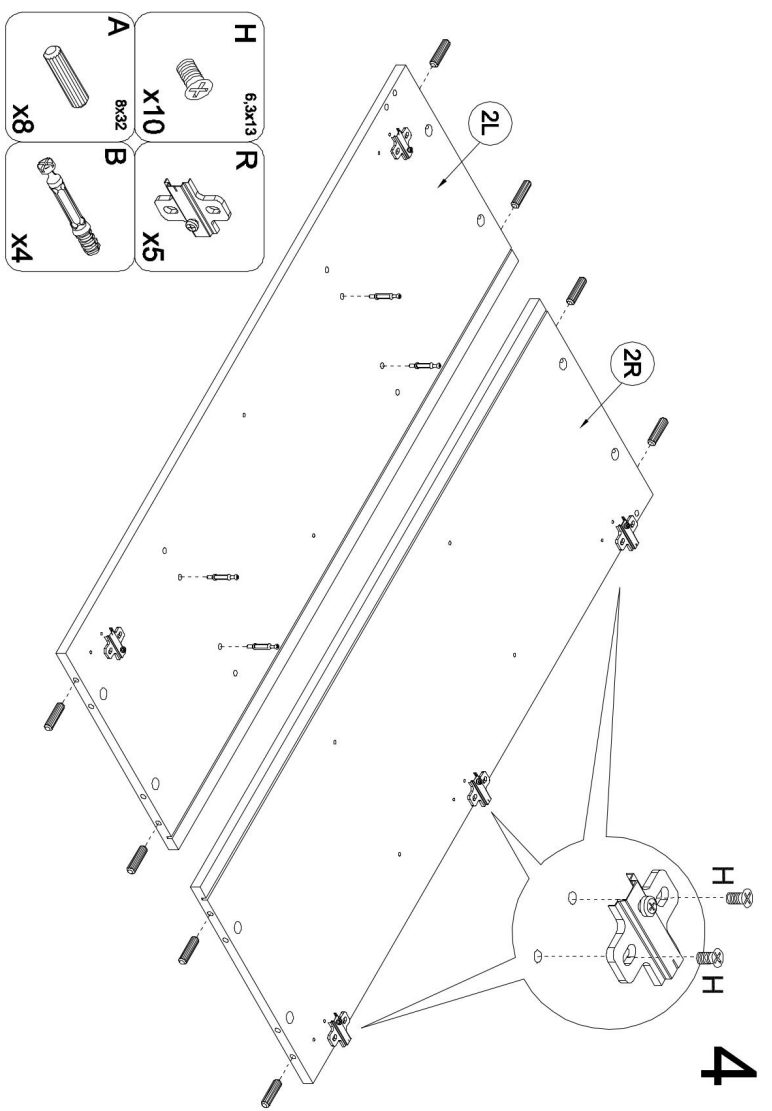
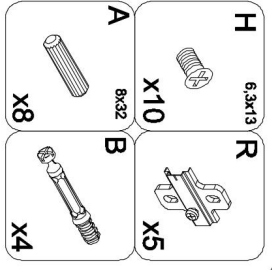
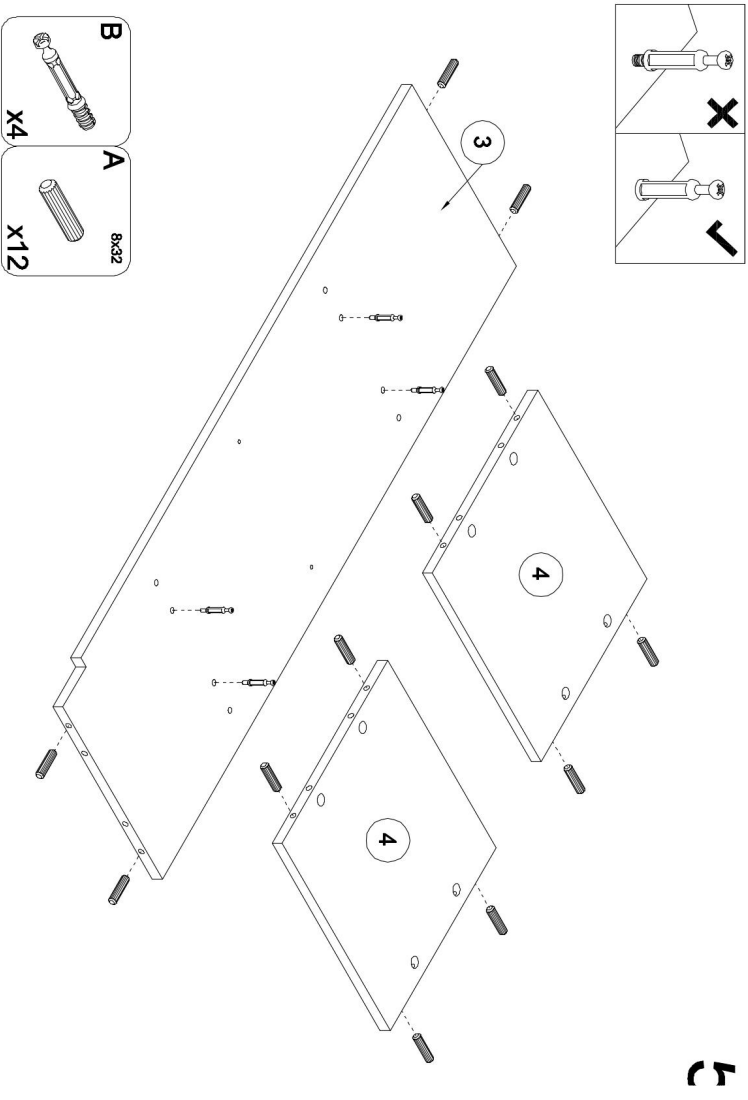
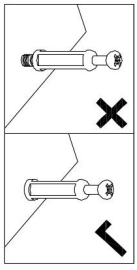
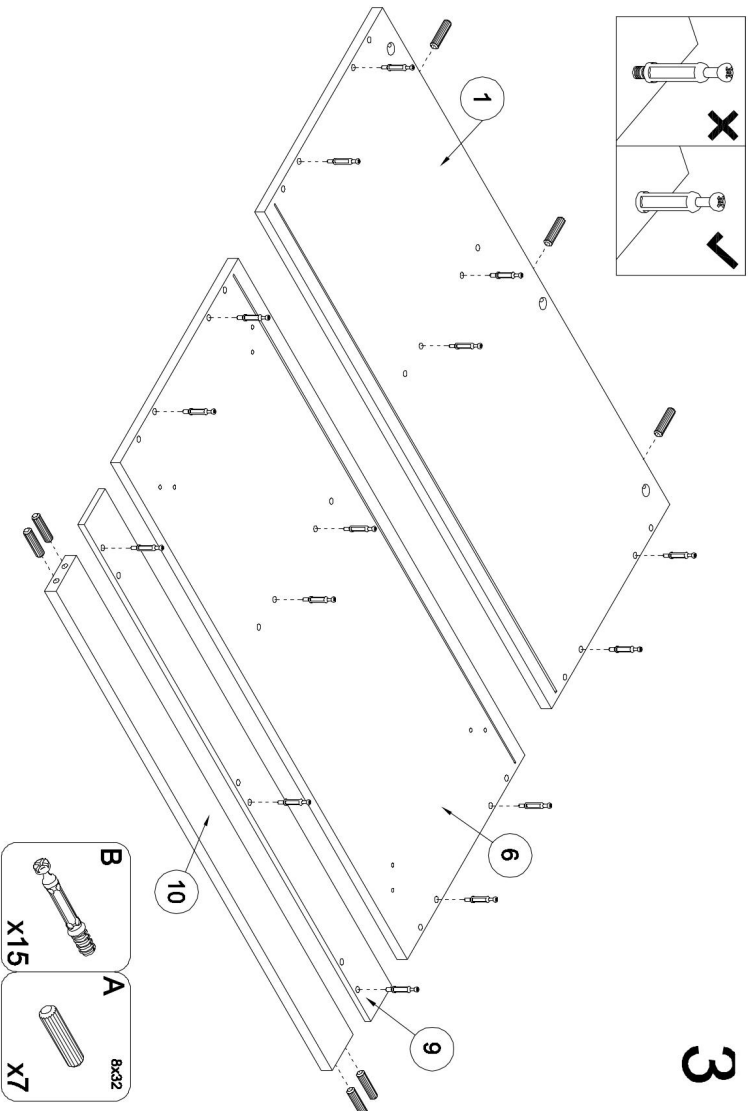
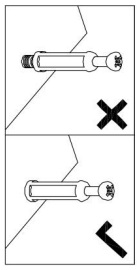
1

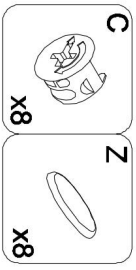
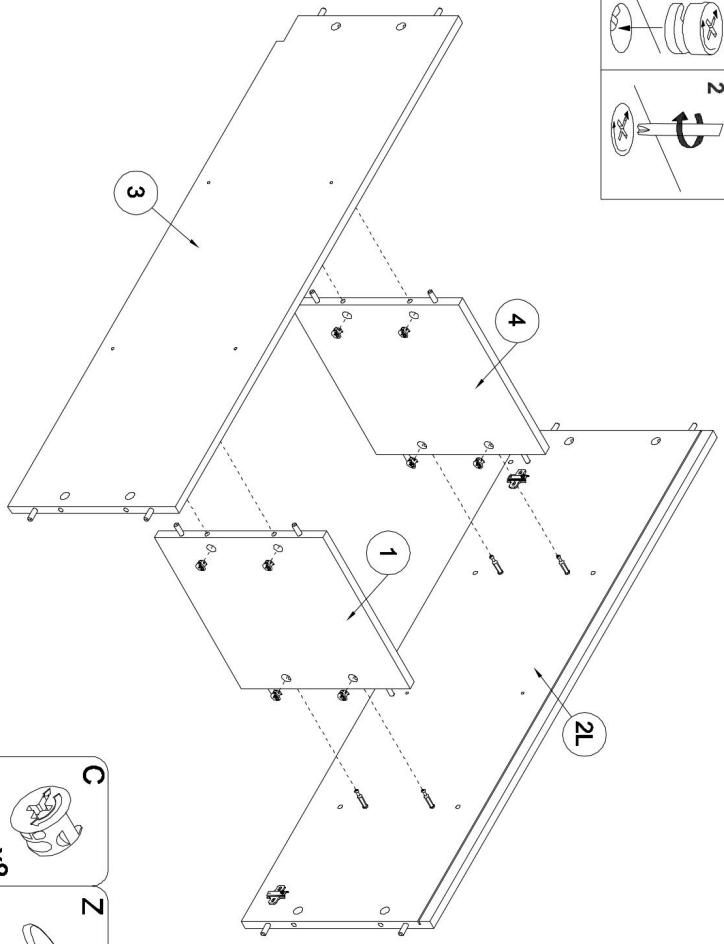
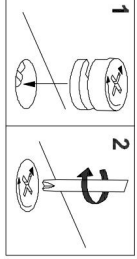


ZA x1	C x23	B x23	Z x23	HD x8	NGD x4	ZC x8	NA x1	TB x1	TA x1
	A x27	H x10	R x5	N x14	PC x5	X x14	NC x4	ZE x4	Z x8
								ND x10	ZD x4

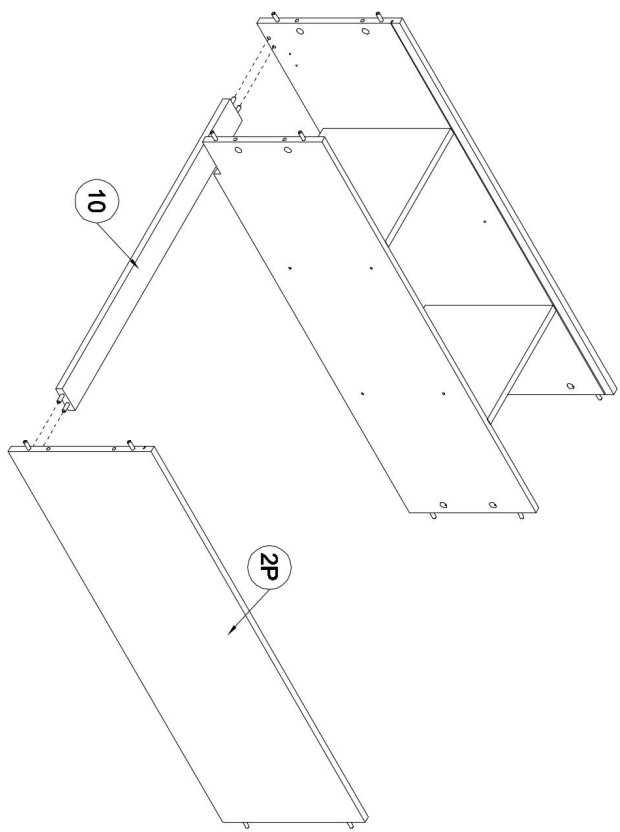


2

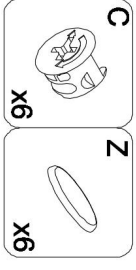
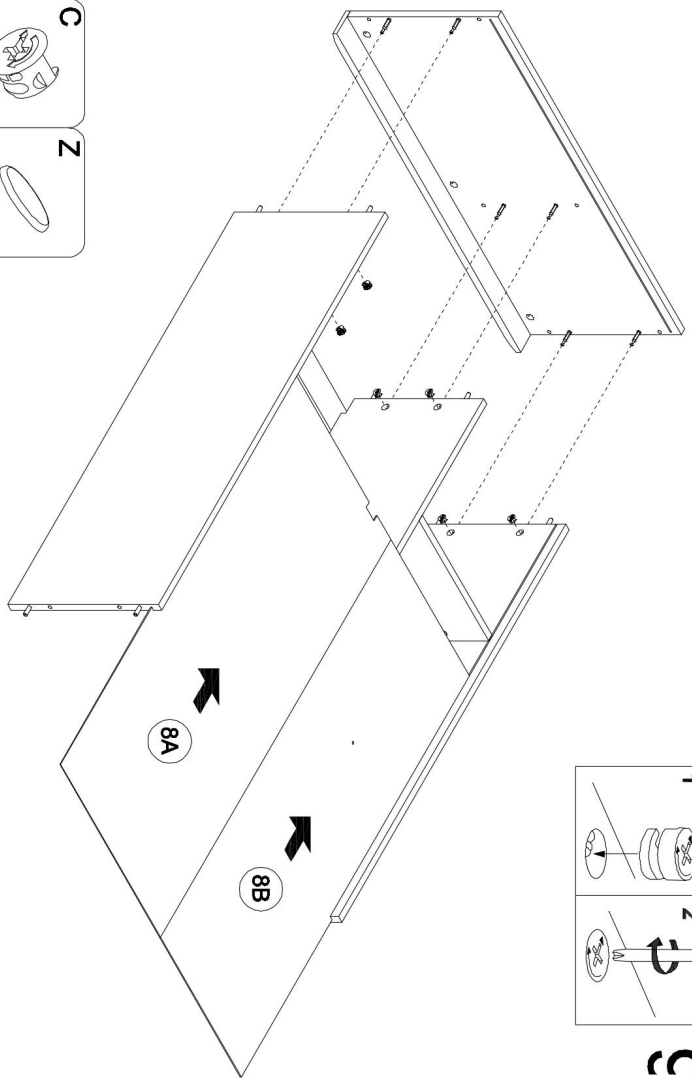
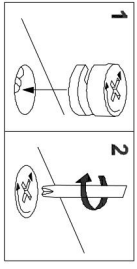




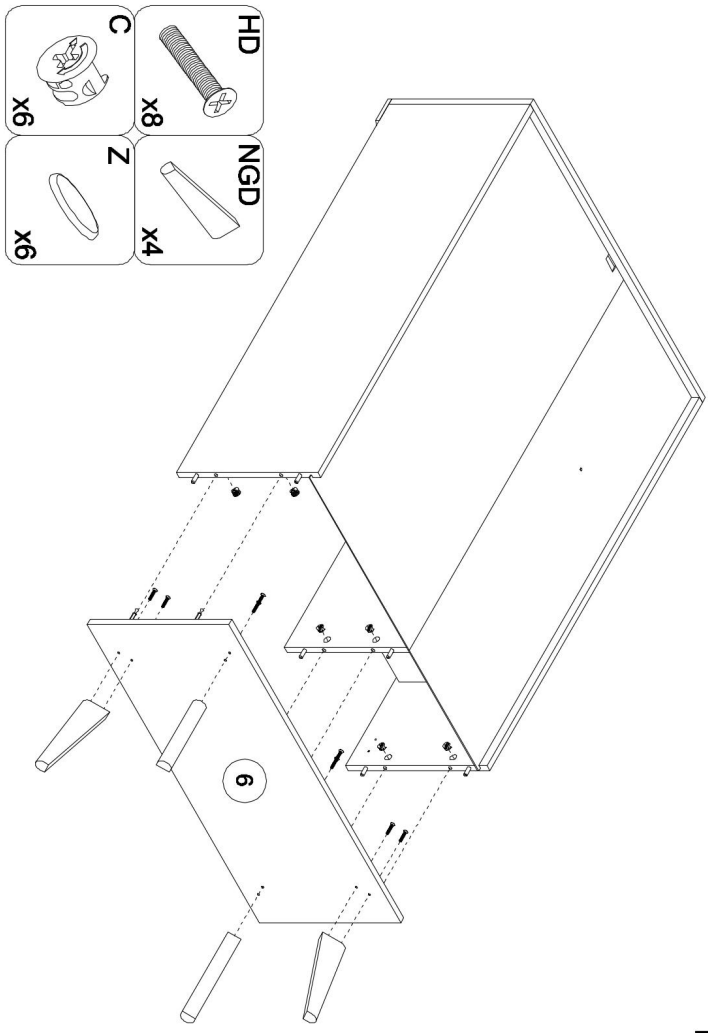
7



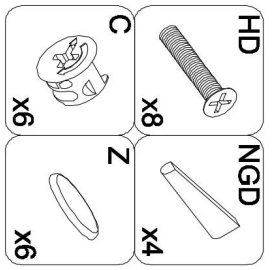
8



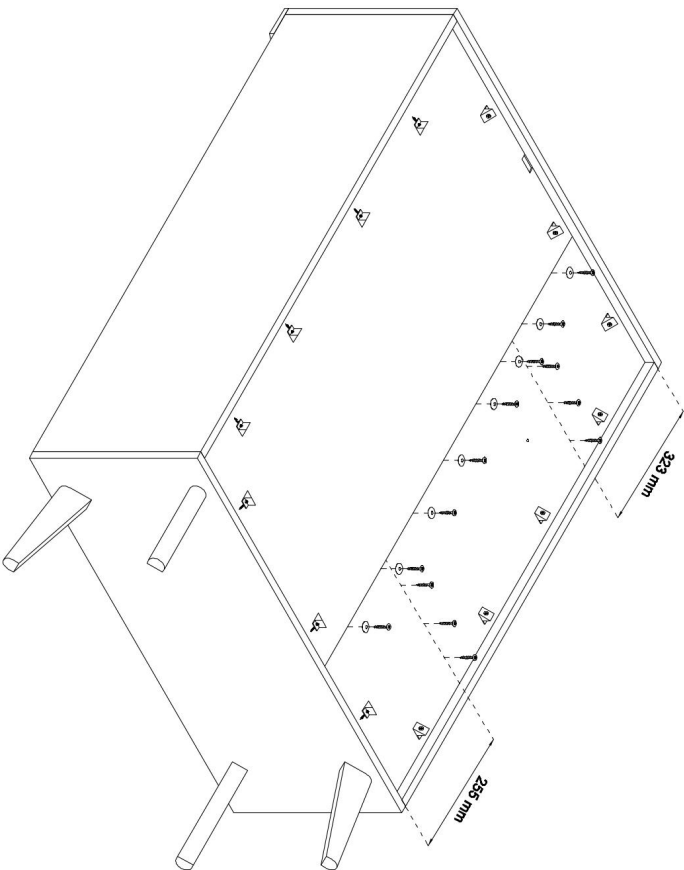
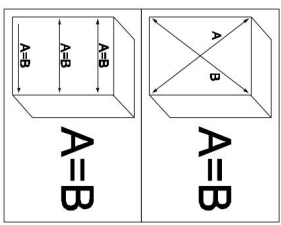
9



10

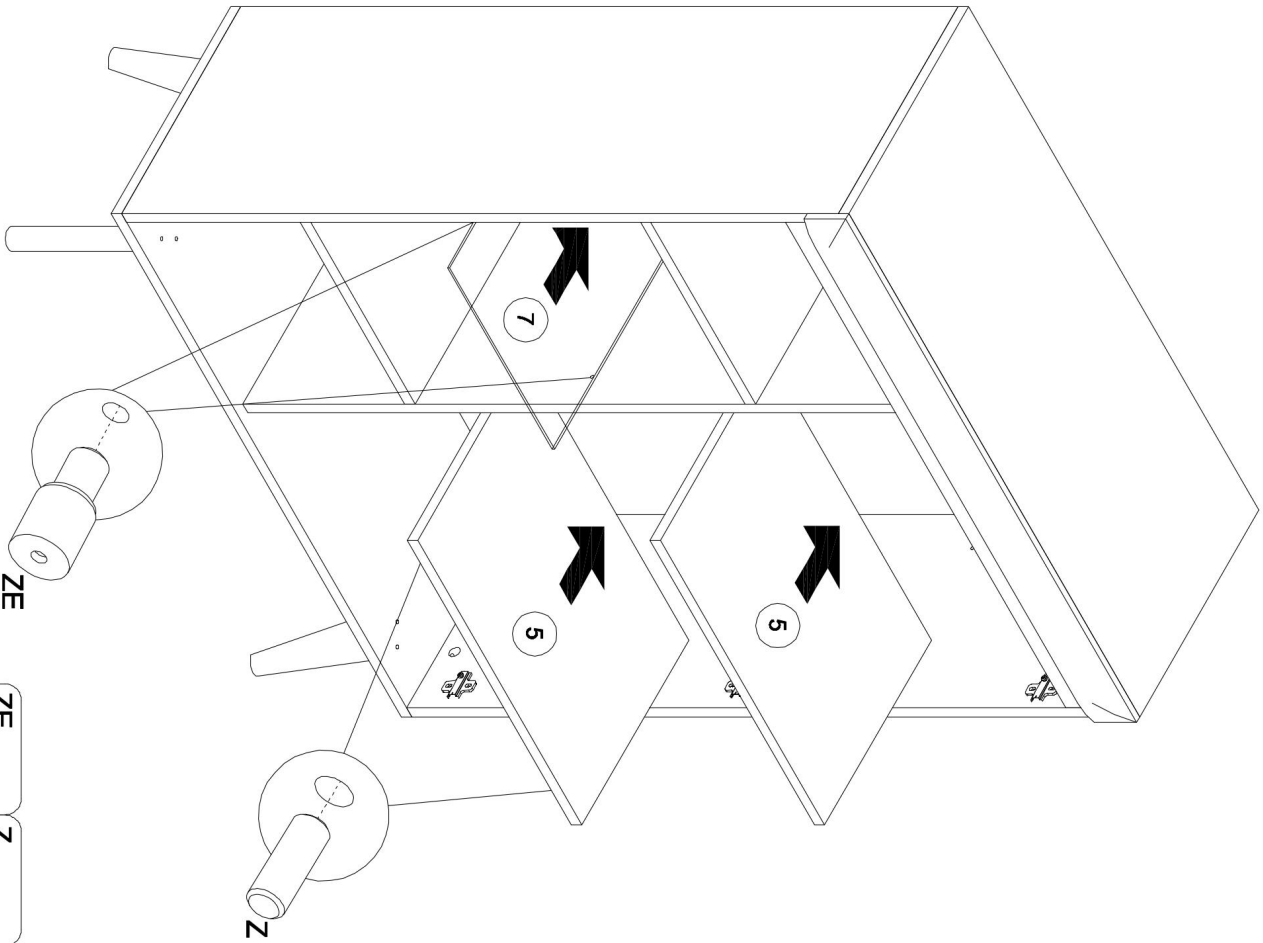


11

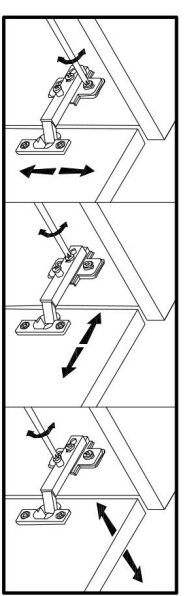
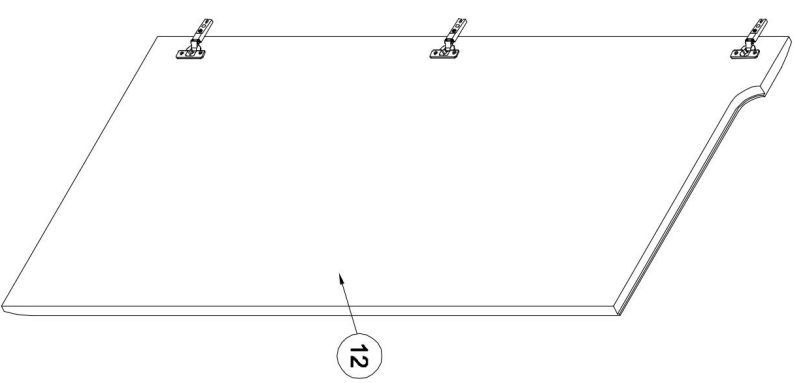
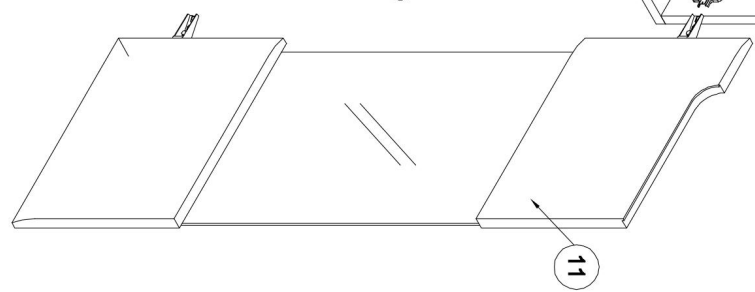
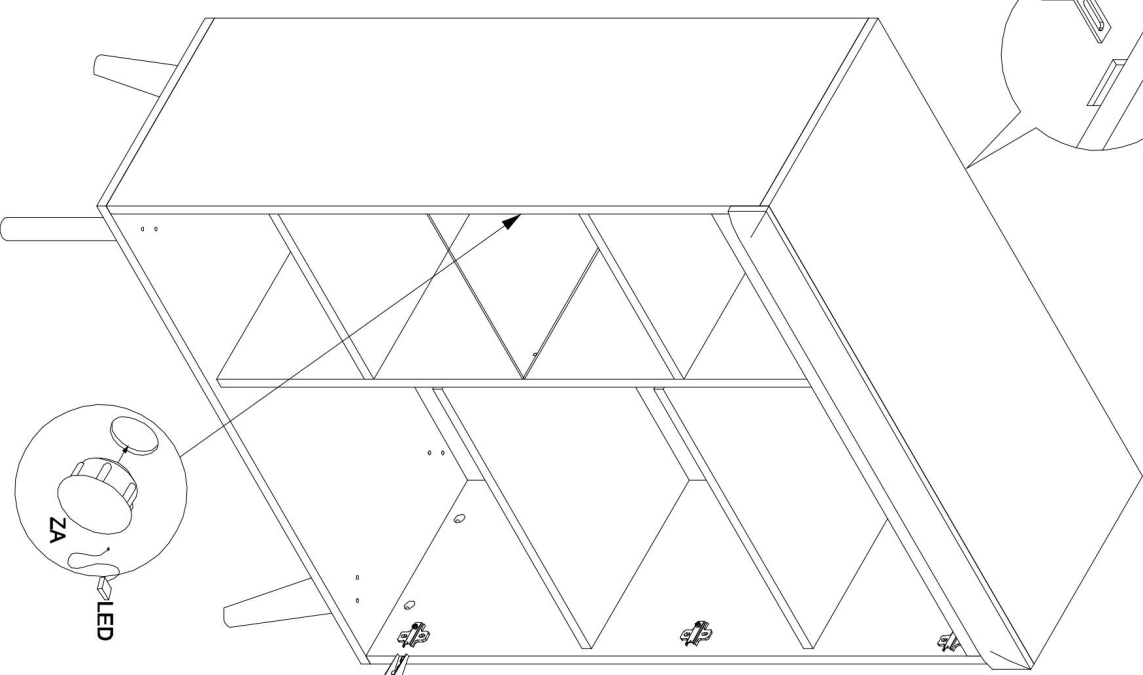
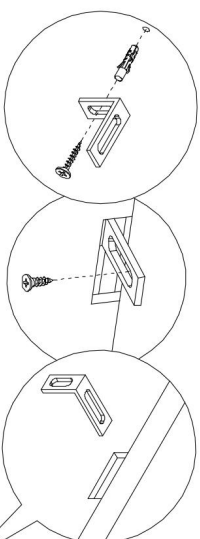


- ZC x8
- N 3x20 x14
- X x14

12



- ZE x4
- Z x8



- NA 4x13 x1
- TB x1
- TA x1
- ZA x1